

# MORTEX<sup>®</sup>

Mineral Skin

Technical and decorative micro-mortar  
« waxed concrete » type







MORTEX®

# A WIDE RANGE OF OPTIONS

Micro-mortar « waxed concrete » type for technical and decorative covering, the MORTEX coating offers you a wide range of options for your new-build or renovation projects :

- Both indoor and outdoor
- From floors to ceilings
- From showers to swimming pools
- For furniture and high-end decoration
- Available in various shades enhanced by stunning effects and finishes

Our vast experience in sealing and renovation techniques has enabled us to develop a range of coatings offering various technical performance characteristics :

- Impermeability
- Flexibility
- Adhesion
- Resilience
- Fine thickness
- An extensive range of shades and looks



MORTEX®

# COMBINING TECHNOLOGY AND AESTHETIC APPEAL

---

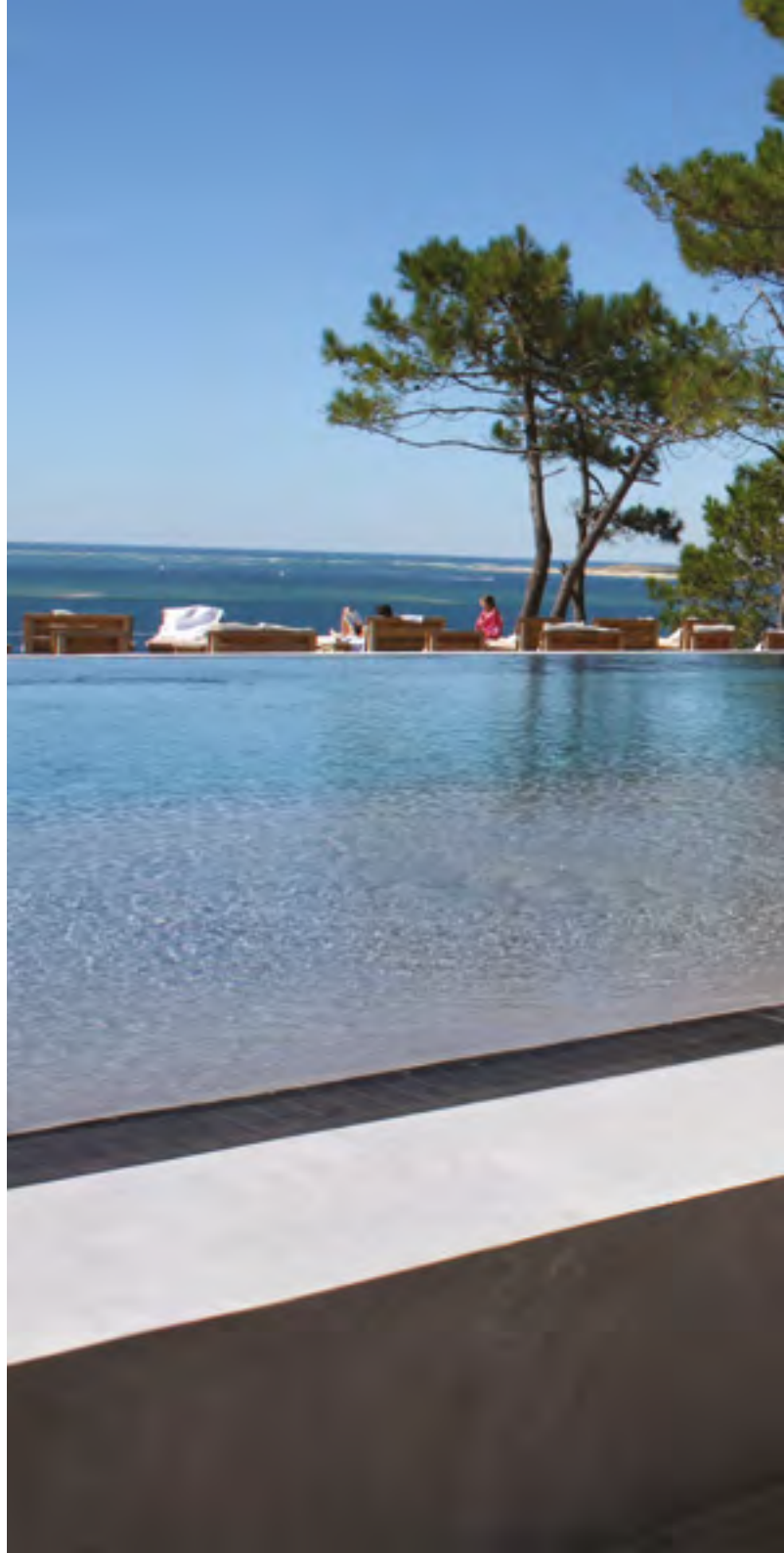
Thanks to its outstanding waterproofing properties, the MORTEX coating is the ideal solution in bathrooms. It is the perfect product for Italian-style showers, baths and sinks, steam rooms, water walls, etc.

# FREEDOM OF EXPRESSION

---

*Swimming pools don't all have  
to look the same - swim away in  
your imagination.*

The MORTEX coating opens  
the door for your creative ideas  
allowing you to choose from a  
vast array of designs and shades.



# CONTINUITY IN STYLE

The MORTEX coating opens your spaces by creating continuous surfaces respecting technical limits.

The MORTEX coating can be applied on a screed floor with an adapted underfloor heating system.



# MORTEX®

## A PRODUCT THAT IS A PERFECT FIT

---

Thanks to its **resilience**,  
**flexibility**, fine **thickness**  
and exceptional **adhesive**  
**properties**, the MORTEX  
coating can be used on a  
wide range of surfaces.



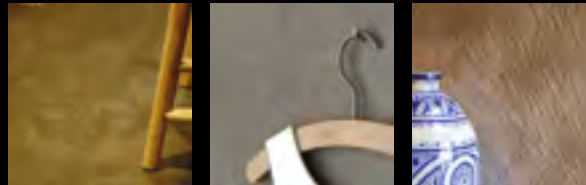




MORTEX®

# THE ALLY OF MATERIALS

While the MORTEX coating possesses many characteristics, egocentrism is certainly not one of them. The MORTEX coating is altruistic as it goes with all other materials providing style and brio.



*It makes wood,  
stone, ceramics,  
metal and textiles all  
look good.*



MORTEX®



A close-up photograph of a person's hand using a long-handled metal trowel to smooth a grey, textured coating on a wall. The trowel has a wooden handle and a wide, flat metal blade. The background shows the wall being worked on, with some visible texture and a crack.

# AN ATTRACTIVE OPTION FOR RENOVATIONS

The MORTEX coating easily covers existing tiling on both floors and walls avoiding arduous removal work.

# MORTEX<sup>®</sup>

## A SENSUAL MATERIAL

---

The MORTEX coating embellishes all of your projects giving them a unique mineral look that is very pleasant to touch. An appropriate protection is necessary in some cases.

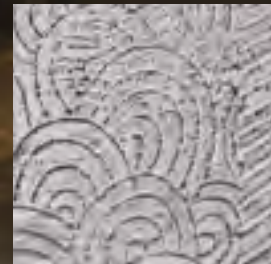


# MORTEX®

## LIMITLESS POSSIBILITIES

*Colours, shades, designs, textures  
and effects - the only limitations are  
those of your imagination.*

With the MORTEX coating the  
covered surfaces are given an  
elegant and timeless look which is  
entirely personalised.





MORTEX®

# A RESPONSIBLE AND SUSTAINABLE MATERIAL

Like all BEAL products, the MORTEX coating meets the three key requirements of sustainable development.

## **Economy**

The wide-ranging options for application and finishes offered by the MORTEX coating provide each user with customisable added value. Mixed on site, any excess of products can always be reused for other projects and/or other types of applications.

## **Social**

The very nature of the MORTEX coating and the on-site training opportunities encourage the use of local labour.

## **Environmental**

The MORTEX coating allows existing surfaces to be recovered which not only results in limited waste but also far fewer restrictions for renovation or new-build projects.



A photograph of a modern building with large glass windows and a courtyard. The courtyard features a water feature with a dark, reflective surface. The building has a light-colored facade and large glass windows. The sky is blue with some clouds. The text is overlaid on the water feature.

Thanks to its fine thickness and low consumption, the MORTEX coating ensures lower transport costs and a significant reduction in environmental footprint.

A person wearing a blue t-shirt and white gloves is using a spray gun to apply a blue coating to a surface. The spray gun is connected to a green hose. The background is a solid blue color.

MORTEX<sup>®</sup>

## AN ACCESSIBLE PRODUCT

---

### **Training**

Users and designers can envisage new ways of applying the MORTEX coating every day.

Careful and efficient application requires the mastery of basic techniques.

### **A programme combining practice and theory**

BEAL organises training on the MORTEX coating application techniques on an ongoing basis. The company has training centres and experienced trainers. This training provides participants with an insight into the various application methods whether technical or decorative.

### **Interested ?**

*Find the description of the training sessions, the dates and the registration arrangements on [www.bealtraining.com](http://www.bealtraining.com)*



# MORTEX<sup>®</sup>

## A TRADEMARK PRODUCT

BEAL is the **only company that develops** and **manufactures** the MORTEX brands.

Beware of imitations and counterfeits of BEAL trademarks, products and training courses. They do not meet the same quality standards and do not guarantee the same results.

Ask your installer for project references and check your choice on a sample using « ad hoc » protection before placing an order.

BEAL designs, develops, manufactures and distributes other highly technical products : coverings for façades, water repellents CAPILASIL® to combat rising damp and to waterproof façades, the BEALSTONE® coating « terrazzo » type, etc.



Beal International s.a.  
Z.I. Noville-les-Bois  
Rue du Tronquoy 8  
5380 Fernelmont - BELGIUM  
T. +32 (0) 81 83 57 57 - F. +32 (0) 81 83 57 67  
info@beal.be - www.beal.be  
VAT : BE 0414 592 153

